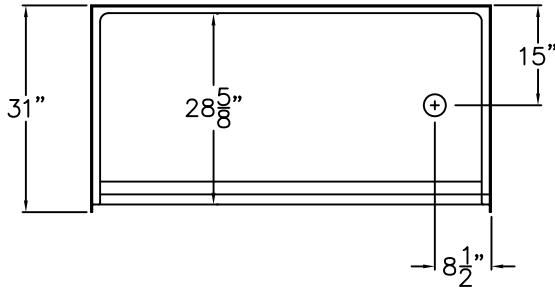


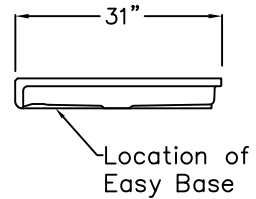
Comfort Series

SUBMITTAL DATA

TOP VIEW



SIDE VIEW



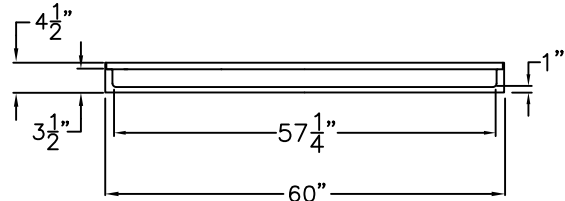
Barrier Free Shower Pan

The shower enclosure shall be Laurel Mountain Whirlpool Model LM 6030 BF 1.0 Pan Left or Right Drain. Finished surface shall be of a sanitary-grade polyester gelcoat exhibiting a minimal thickness of 15 dry mils, and a finished cured Barcol hardness of 80-90 as tested with ASTM D-2583. Unit construction shall be of molded reinforced fiberglass with a minimum fiberglass content. The unit shall have outside dimensions of 60" x 31" x 4 1/2". The pan shall meet ANSI Z124.1.2, Home Innovation Research Lab, UPC, comply with CSA, and shall meet the requirements of the Southern Building Code.

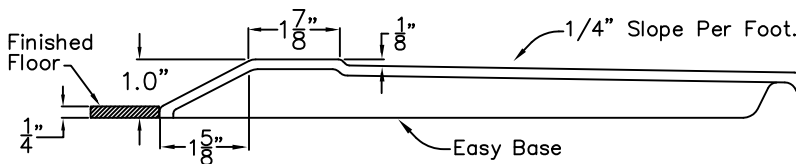
The enclosure shall be equipped with the following installed accessories:

- 1) Low entry 1.0" Threshold.
- 2) Available Left or Right Hand Drain Location.
- 3) Easy Base self-sustaining bottom.

FRONT VIEW



Detail of 1.0" Threshold



DUE TO THE NATURE OF THE MATERIALS INVOLVED
UNIT DIMENSIONS MAY VARY ± 1/2 INCH

Job Name:	LAUREL MOUNTAIN WHIRLPOOLS
Approved By Print Name:	Drawing#: LM 6030 BF 1.0 Pan Left or Right Drain Easy Base
Approved By Signature:	Date Approved: Date: 3-31-09 Revised: 7-17-14
Rep.:	Wholesaler: Quote No.