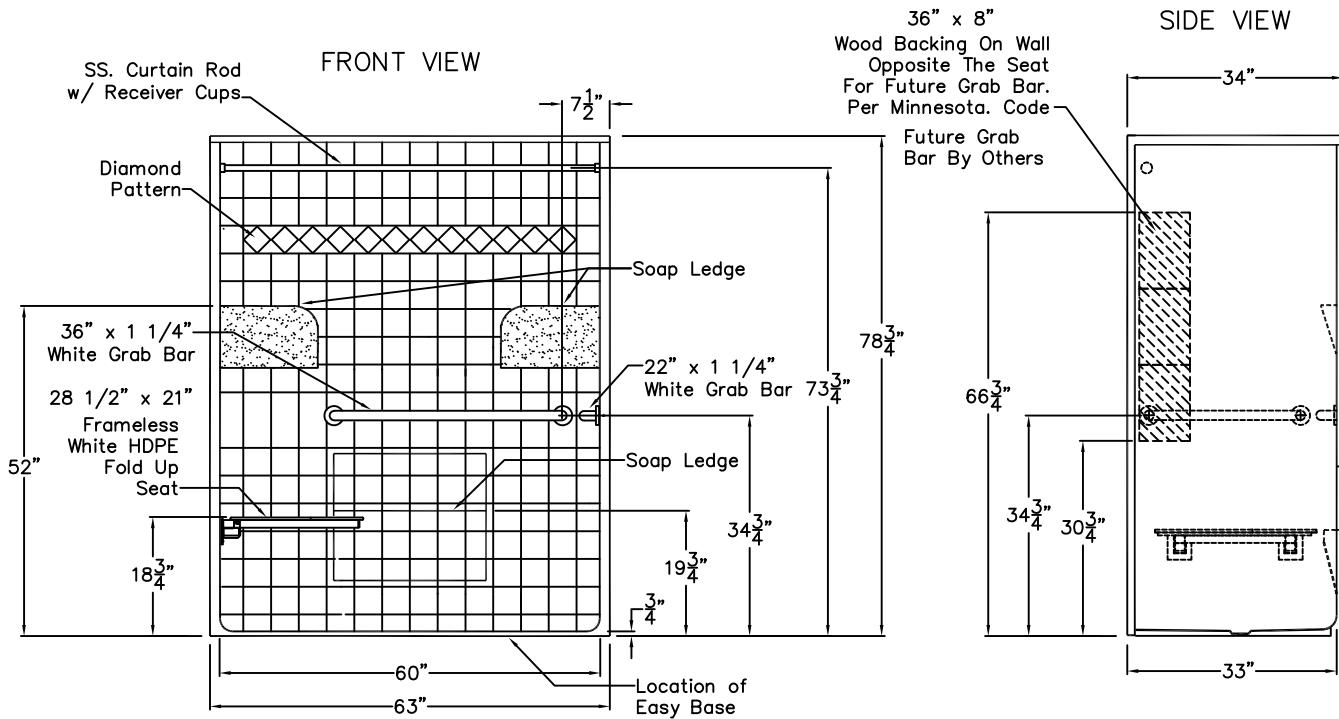


Special Needs Series SUBMITTAL DATA



Roll-In Shower Stall

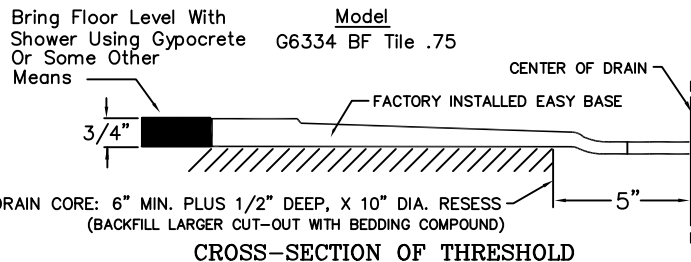
The shower enclosure shall be Laurel Mountain Whirlpools Model LM 6334 BF Tile .75 center, right or left. Finished surface shall be of a sanitary-grade polyester gelcoat exhibiting a minimal thickness of 15 dry mils, and a finished cured Barcol hardness of 80-90 as tested with ASTM D-2583. Unit construction shall be of molded reinforced fiberglass with a 15% minimum fiberglass content. The unit shall have outside dimensions of 63" x 34" x 78 3/4". The base shall be attached to the sump in such a manner to form an integral part with an inner and outer coating of reinforced polyester resin. The unit shall meet ANSI A117.1, IAPMO Z124-11, ADA, BOCA, Home Innovation, Research Lab, UPC, CSA B45.5, and meet the requirements of Southern Building Code.

The enclosure shall be equipped with the following installed accessories:

- 1) One 36" x 1 1/4" diameter 18 gauge white grab bar on the back wall,
- 2) One 22" x 1 1/4" diameter 18 gauge white grab bar on valve side wall, both with 1 1/2" statute clearance, mounted with stainless steel bolts and secured from the rear with a 3" x 3" x 11 gauge metal mounting plate,
- 3) Molded leg ledge,
- 4) Molded corner soap dishes,
- 5) Tile finish,
- 6) One inch diameter 18 gauge stainless steel curtain rod with receiver cups,
- 7) 28 1/2" x 21" Frameless white HDPE fold up seat,
- 8) Factory installed Easy Base self sustaining bottom,
- 9) Wood backing on side wall opposite the seat for future vertical grab bar, (By Others),
- 10) Tri-Cell backing,
- 11) 3/4" Threshold.

THIS UNIT FEATURES THE OUTSIDE DIMENSIONS OF 63" OF OVERALL WIDTH. THIS DOES NOT ALLOW FOR FULL ENCLOSURE OF THE BOLTS THAT ARE USED TO SECURE THE BARS AND SEAT IN PLACE. THE BOLT AND NUT COMBINATION SHOULD NOT PROTRUDE ANY MORE THAN 3/4" ON EITHER SIDE. THIS SHOULD NOT CREATE ANY TYPE OF INSTALLATION PROBLEMS EXCEPT FOR A DRY WALL ENCLOSED FIRE WALL INSTALLATION AREA THAT WOULD NOT ALLOW FOR ANY VARIATIONS. IN A STANDARD STUD/ OPENING INSTALLATION THE EXTENSION OF THE HARDWARE SHOULD NOT CAUSE ANY TYPE OF PROBLEM.

NOTE: THIS UNIT WILL NOT ACCEPT A DOOR!



DUE TO THE NATURE OF THE MATERIALS DIMENSIONS MAY VARY ± 1/2"

LAUREL MOUNTAIN WHIRLPOOLS

Drawing#: LM 6334 BF Tile .75 WHBW WSW
BVB FHDP CR Easy Base

Date: 6-22-07.

Revised: 7-17-14

Approved By Print Name:

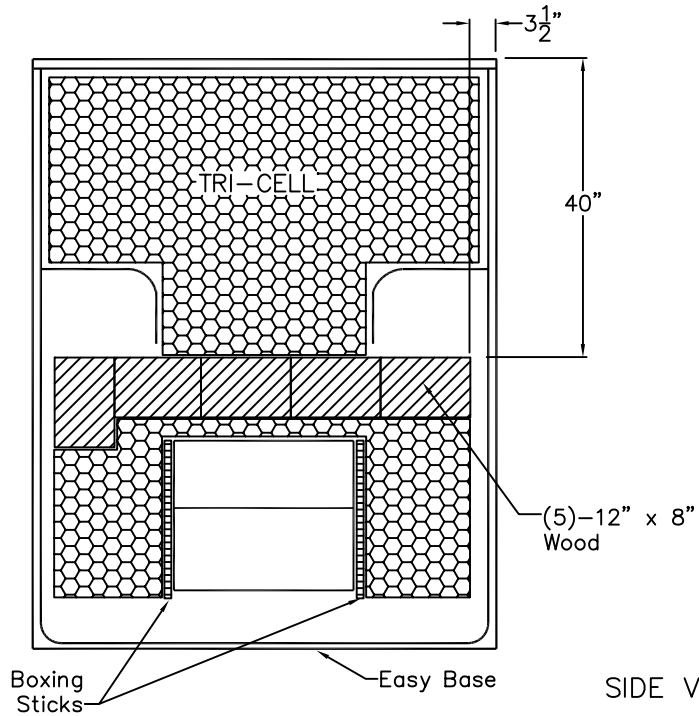
Signature:

Quote No.:

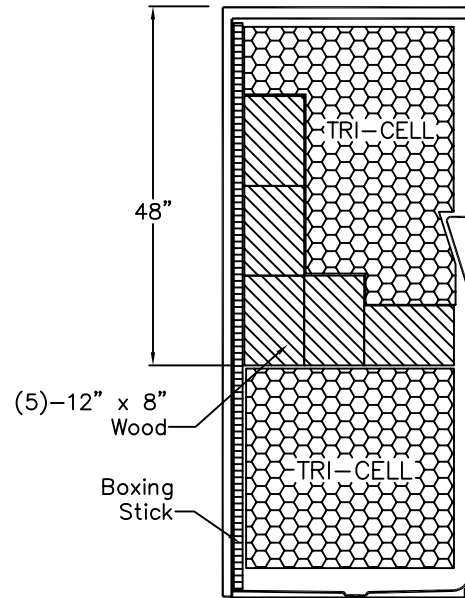
Board Placement Drawing

SUBMITTAL DATA

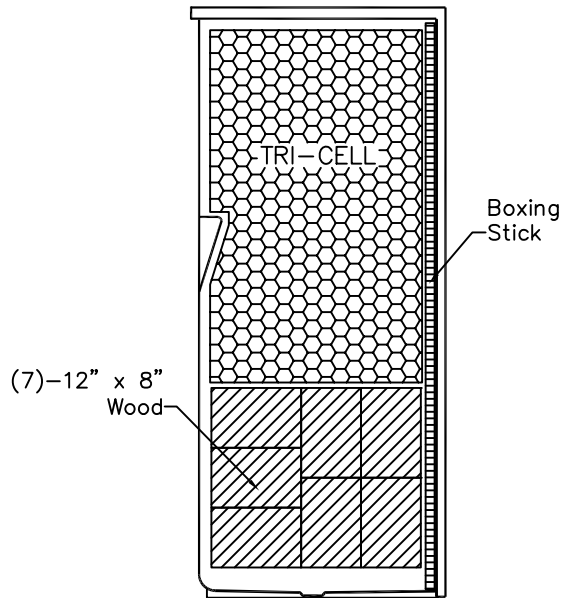
FRONT VIEW



SIDE VIEW



SIDE VIEW



Tri-Cell Coverage-37 Sq. Ft.

DUE TO THE NATURE OF THE MATERIALS
DIMENSIONS MAY VARY ± 1/2"

Job Name:	LAUREL MOUNTAIN WHIRLPOOLS		
Model No.:	Drawing#: LM 6334 BF Tile .75 WHBW WHSW BVB FHDP CR Easy Base-BP		
Approved by:	Date Approved:	Date: 5-23-07	Revised: 7-17-14
Rep.:	Wholesaler:	Quote No.:	

LAUREL MOUNTAIN WHIRLPOOLS
2418 Wilmington Road Suite C New Castle Pa. 16105
1 (800) 930 0050 - FAX 1-(800) 930 0051