



SLAYDEN
60 x 32 x 77
Low Threshold Shower

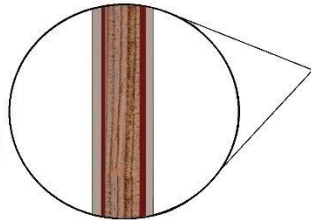
Available in white
Quick Ship in 7 days

Features

- Easy entry, low, 4" threshold
- Large integral comfort height seat (19" x 19")
- Sturdy shower base with textured floor
- Accessory shelf and foot ledge
- Simple, easy, 4 piece installation from front or rear
- Accommodates a shower door
- Full ArmorCore reinforced walls for extra strength that enables bars to be located to fit your individual needs
- Premium, durable applied acrylic/fiberglass construction
- High Gloss, smooth finish with arched back wall
- Attractive and easy to clean
- Limited Lifetime warranty
- Meets or exceeds UPC, IPC, ANSI Z124.1, NAHB, HUD, FHA
- Made in the USA

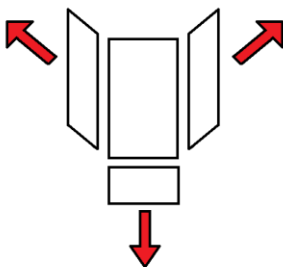


**ArmorCore
Reinforced Walls**



**Low Step,
Easy Entry**

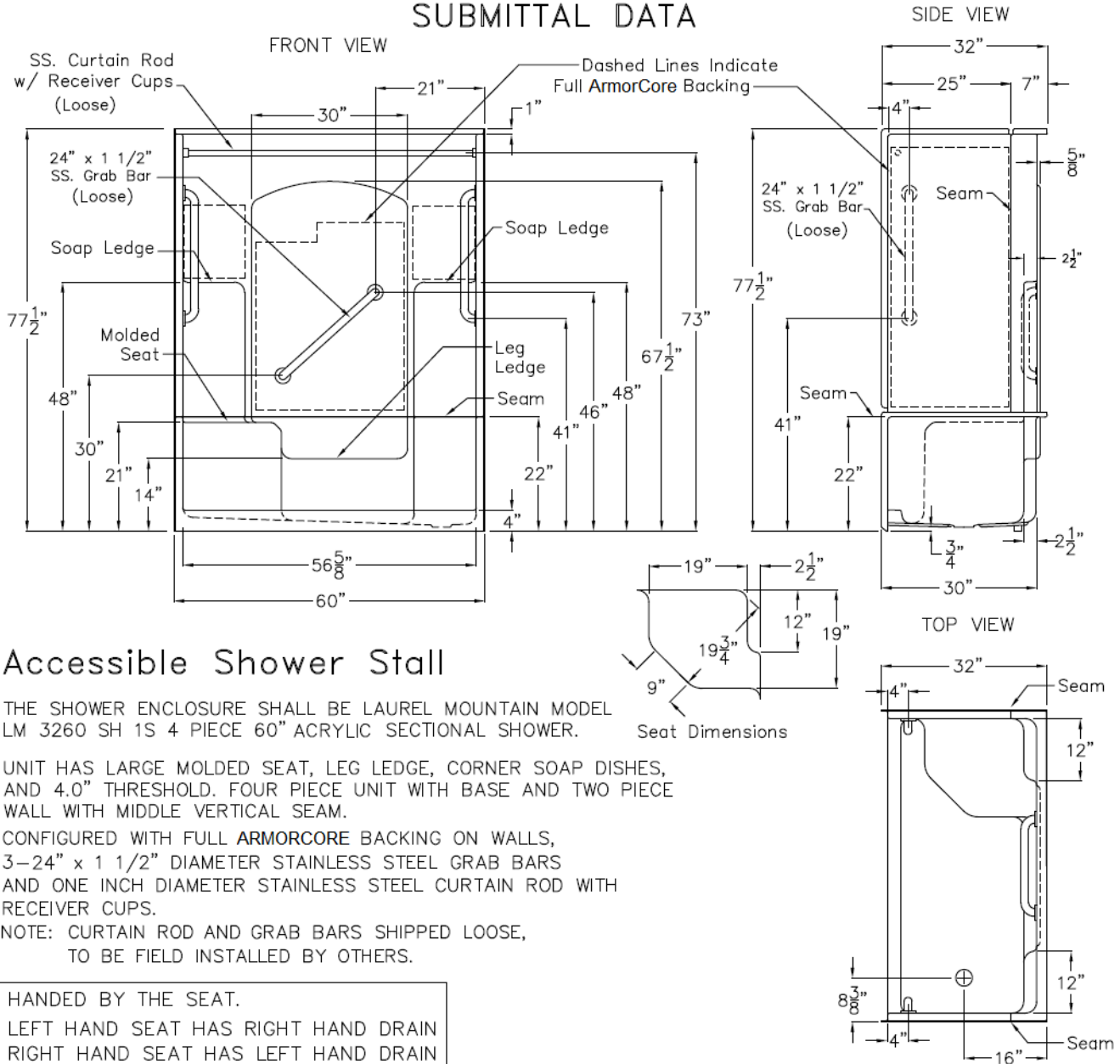
Ships Assembled
Easy to Dis-assemble



Seat & Drain	Model #	Item #
LH Seat w/ RH Drain	LM3260SH1S4PL	639290
RH Seat w/ LH Drain	LM3260SH1S4PR	639299

Ramer

SUBMITTAL DATA



Accessible Shower Stall

THE SHOWER ENCLOSURE SHALL BE LAUREL MOUNTAIN MODEL LM 3260 SH 1S 4 PIECE 60" ACRYLIC SECTIONAL SHOWER.

UNIT HAS LARGE MOLDED SEAT, LEG LEDGE, CORNER SOAP DISHES, AND 4.0" THRESHOLD. FOUR PIECE UNIT WITH BASE AND TWO PIECE WALL WITH MIDDLE VERTICAL SEAM.

CONFIGURED WITH FULL ARMORCORE BACKING ON WALLS, 3-24" x 1 1/2" DIAMETER STAINLESS STEEL GRAB BARS AND ONE INCH DIAMETER STAINLESS STEEL CURTAIN ROD WITH RECEIVER CUPS.

NOTE: CURTAIN ROD AND GRAB BARS SHIPPED LOOSE, TO BE FIELD INSTALLED BY OTHERS.

HANDED BY THE SEAT.
 LEFT HAND SEAT HAS RIGHT HAND DRAIN
 RIGHT HAND SEAT HAS LEFT HAND DRAIN

BASE SEAM IS 22" ABOVE THE BOTTOM OF THE SKIRT.

Unit complies with IAPMOZ124-2011, Home Innovation Research Lab, UPC, HUD, FHA, and CSA B45.5.

DUE TO THE NATURE OF THE MATERIALS DIMENSIONS MAY VARY ± 1/2"

	LAUREL MOUNTAIN
	Drawing#: LM 3260 SH 1S 4P 4.0 3-SS Grab Bars CR
	Date: 4-27-07. Revised: 12-19-17
	RAMER
LAUREL MOUNTAIN 26 Nesbitt Road, Suite 257, New Castle Pa. 16105 1 (800) 930 0050 - FAX 1-(800) 930 0051	